



## News Release

**DFW Connector Project**  
7651 Esters Blvd., Suite 100  
Irving, TX 75063

877-411-4212  
[www.dfwconnector.com](http://www.dfwconnector.com)

FOR IMMEDIATE RELEASE

For more information contact:

**Texas Department of Transportation**  
Tony Hartzel: 214-320-4481 (office)  
214-317-0251 (mobile)

**NorthGate Constructors**  
Kristen Schropp: 877-411-4212 (office)  
817-505-7078 (mobile)

### **DFW CONNECTOR: MAJOR TRAFFIC SWITCH IN THE NEW YEAR** NorthGate Constructors to change two bridges to one-way traffic pattern

**GRAPEVINE (December 21, 2011)** — In less than two weeks, NorthGate Constructors will begin a four-night traffic switch at FM 1709/Southlake Blvd. and Northwest Highway. In the new traffic pattern, the Northwest Highway Bridge will become one-way going westbound into Southlake, and Southlake Blvd./FM 1709 will become one-way going eastbound into Grapevine (see attachment for a visual of the new traffic pattern).

Please note the following closure information for each night of the traffic switch, which will take place from 8 p.m. to 6 a.m. each night from January 3 to January 6 (see attachment for detour maps):

#### **8 p.m. to 6 a.m. on Tuesday, January 3:**

- *Closure:* Park Blvd. between Northwest Highway and Wall St.
- *Detour:* Northwest Highway/Gateway Drive

#### **8 p.m. to 6 a.m. on Wednesday, January 4:**

- *Closure:* Southlake Blvd./FM 1709 Bridge
- *Detour:* William D. Tate Avenue
- *Note:* When complete (6 AM on Thursday, 1/5), traffic will only be able to drive eastbound on Southlake Blvd./FM 1709 from Commerce Street to the westbound SH 114 frontage road.

#### **8 p.m. to 6 a.m. on Thursday, January 5:**

- *Closure:* Northwest Highway and Gateway Drive from Park Blvd. to Southlake Blvd./FM 1709
- *Detour:* Kimball Avenue
- *Note:* When complete (6 AM on Friday, 1/6), traffic will only be able to drive westbound on the Northwest Highway Bridge.

#### **8 p.m. to 6 a.m. on Friday, January 6:**

- *Closure:* Eastbound FM 1709 from Commerce St. to the eastbound SH 114 frontage road; two lanes closed on the eastbound SH 114 frontage road
- *Detour:* Gateway Drive

Changing traffic to this temporary one-way pattern will allow NorthGate Constructors to build the new bridge connecting Northwest Highway and Southlake Blvd./FM 1709. Drivers can expect to see a new two-way traffic pattern in the second quarter of 2013.



## News Release

---

### **DFW Connector Project**

7651 Esters Blvd., Suite 100  
Irving, TX 75063

877-411-4212

*[www.dfwconnector.com](http://www.dfwconnector.com)*

Marc Rothwell, Intersections Manager for NorthGate Constructors, shared the reasoning behind the new one-way traffic pattern in this statement: "The new traffic pattern expedites our construction schedule in this area and minimizes impacts to the traveling public. The new pattern will allow us to keep the number of lanes that exist today, and it will also cut down on the number of traffic switches required to complete the construction."

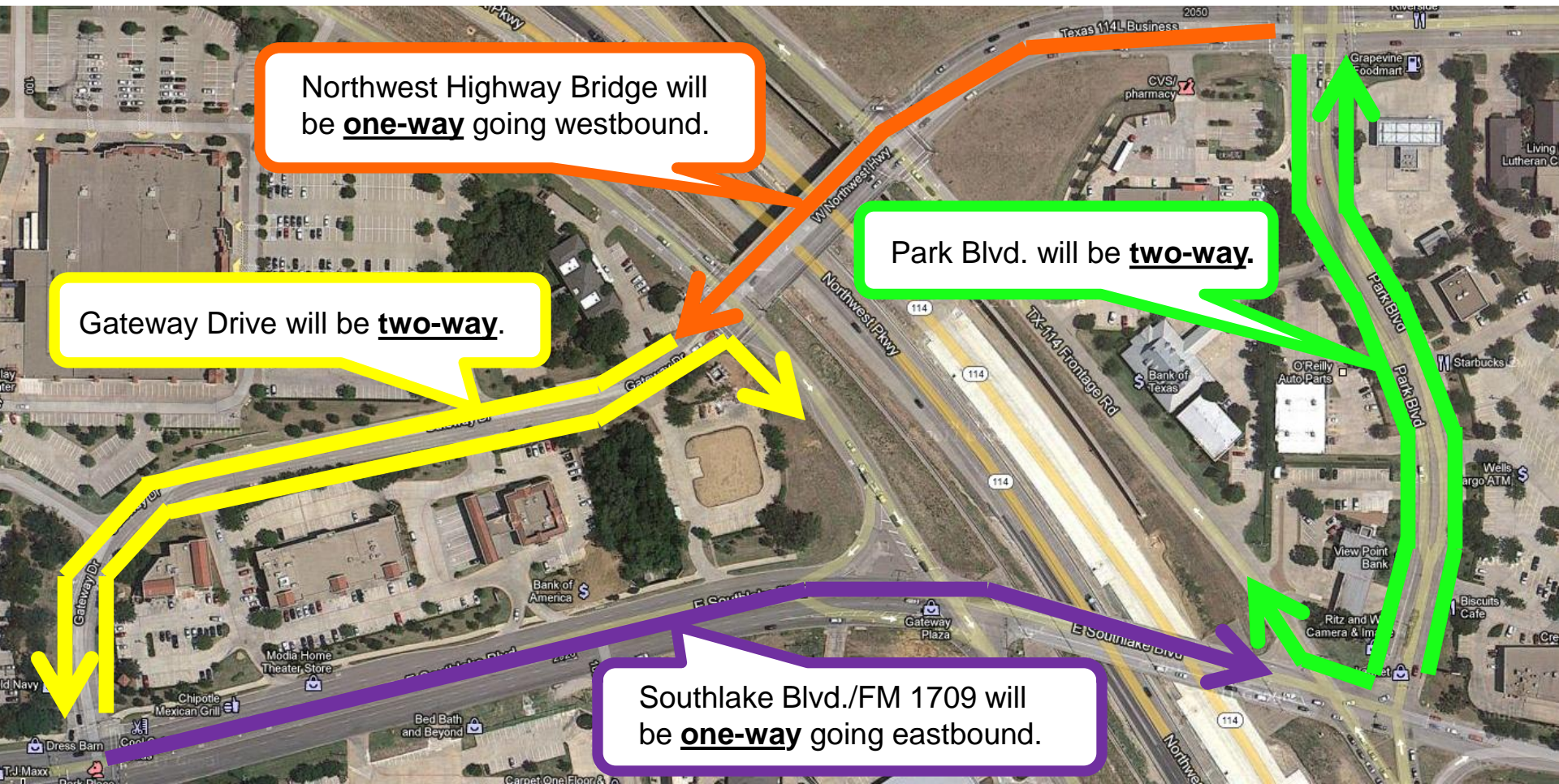
The \$1.02 billion DFW Connector project is being built under a comprehensive development agreement between TxDOT and NorthGate Constructors allowing for NorthGate to design and build the project simultaneously, shortening the time needed to deliver the project. Information on the Project is available online at [www.dfwconnector.com](http://www.dfwconnector.com) or the Info Hotline at 877-411-4212.

###

# Traffic Switch: Southlake Blvd./FM 1709 and Northwest Highway Bridges

In the New Year, the DFW Connector project will change the traffic pattern at the Southlake Blvd./FM 1709 and Northwest Highway Bridges. This change will allow us to construct the new Northwest Highway to Southlake Blvd./FM 1709 Bridge.

The Northwest Highway Bridge will become **one-way** going westbound into Southlake, and Southlake Blvd./FM 1709 will become **one-way** going eastbound into Grapevine. This traffic switch will take place over a period of four nights: **8 PM to 6 AM each night from Tuesday, January 3 to Friday, January 6** (see the following pages for closures).



# Traffic Switch: Southlake Blvd./FM 1709 and Northwest Highway Bridges

**Date and Time:** 8 PM to 6 AM on **Tuesday, 1/3**

**Closure:** Park Blvd. between Northwest Highway and Wall St.

**Detour:** Traffic will be detoured to Northwest Highway/Gateway Drive

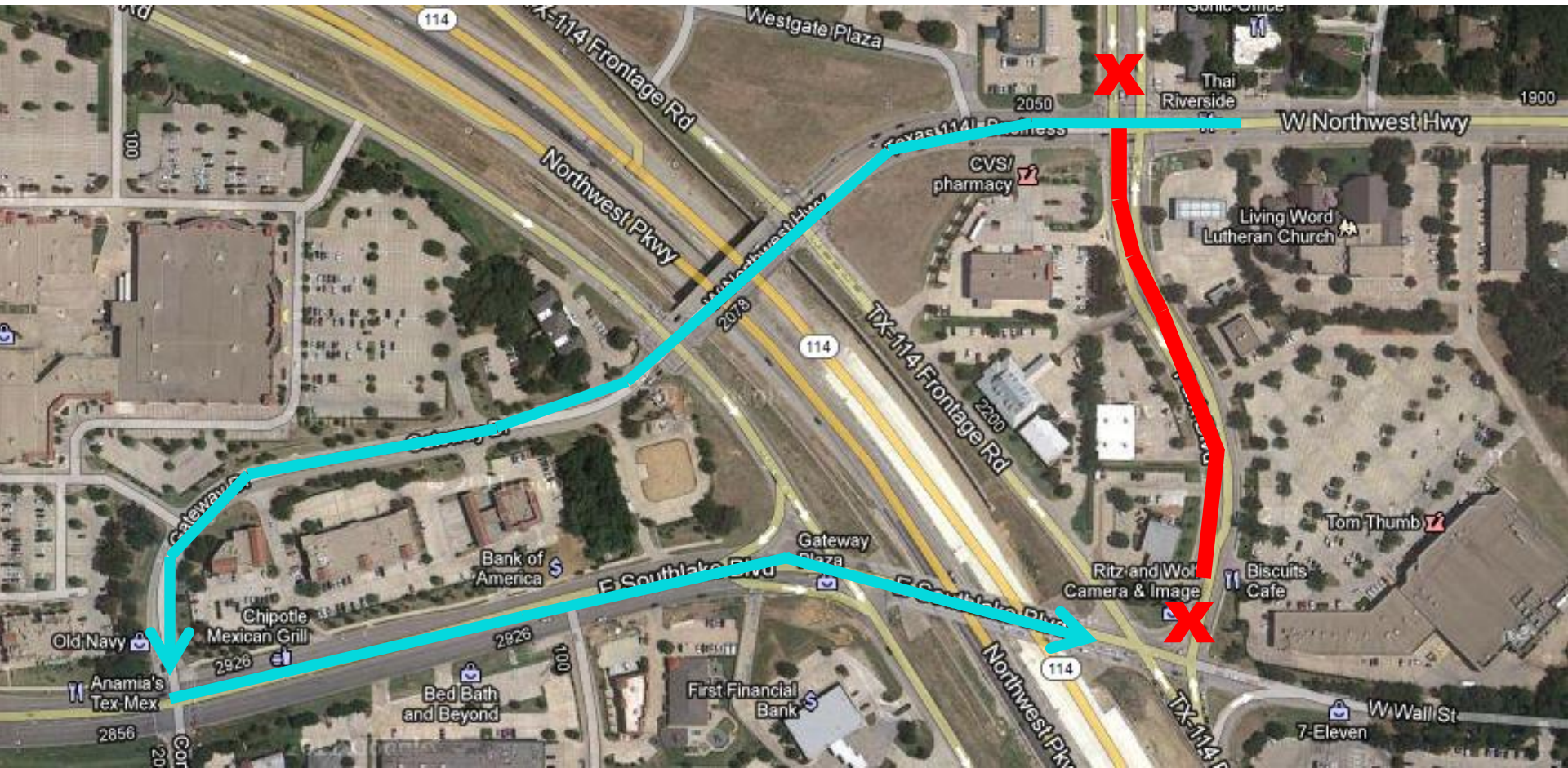


Closed: Park Blvd. between Northwest Highway and Wall St.

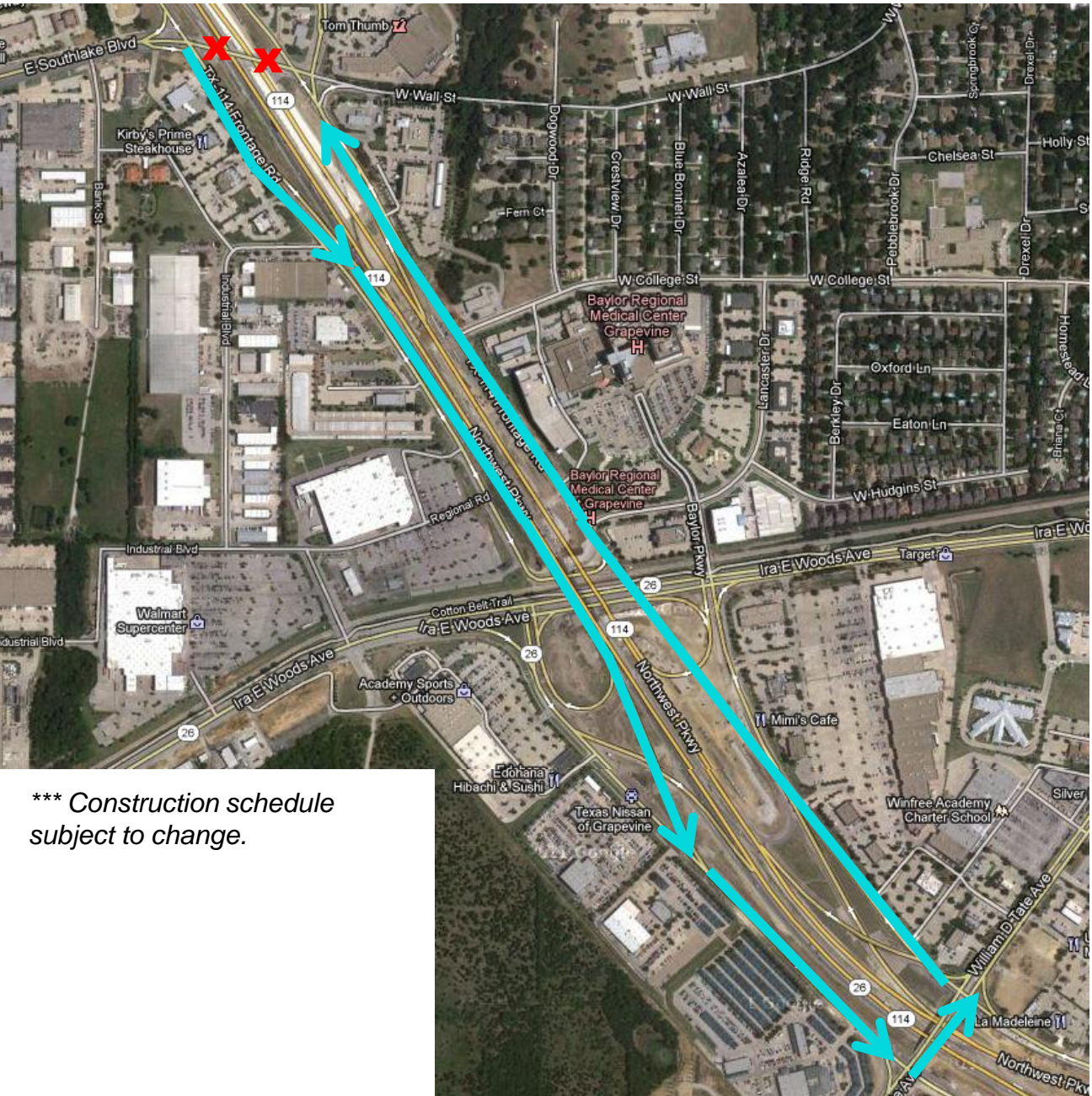


Detour to Northwest Highway/Gateway Drive

*\*\*\* Construction schedule subject to change.*



# Traffic Switch: Southlake Blvd./FM 1709 and Northwest Highway Bridges



**Date and Time:** 8 PM to 6 AM on **Wednesday, 1/4**

**Closure:** Southlake Blvd./ FM 1709 Bridge

**Detour:** William D. Tate Avenue

**NOTE:** When complete (6 AM on Thursday, 1/5), traffic will only be able to drive eastbound on Southlake Blvd./FM 1709 from Commerce Street to the westbound SH 114 frontage road.

\*\*\* Construction schedule subject to change.

- X** Closed: Southlake Blvd./FM 1709 Bridge
- Detour to William D. Tate Avenue.

# Traffic Switch: Southlake Blvd./FM 1709 and Northwest Highway Bridges

**Date and Time:** 8 PM to 6 AM on **Thursday, 1/5**

**Closure:** Northwest Highway and Gateway Drive from Park Blvd. to Southlake Blvd./FM 1709

**Detour:** Kimball Avenue

**NOTE:** When complete (6 AM on Friday, 1/6), traffic will only be able to drive westbound on the Northwest Highway Bridge.

**X** Closed: Northwest Highway and Gateway Drive

**→** Detour to Kimball Avenue

\*\*\* Construction schedule subject to change.



# Traffic Switch: Southlake Blvd./FM 1709 and Northwest Highway Bridges

**Date and Time:** 8 PM to 6 AM on **Friday, 1/6**

**Closure:** Eastbound FM 1709 from Commerce St. to the eastbound SH 114 frontage road; two lanes closed on the eastbound SH 114 frontage road

**Detour:** Gateway Drive

**X** Closed: Northbound Southlake Blvd./FM 1709

**→** Detour to Gateway Drive

\*\*\* Construction schedule subject to change.

